



JOYONWAY

JOYONWAY-Spa App simplified operation instruction

1. Download "JOYONWAY-Spa Control" app in Google Play or iOS App Store.



Android app



iOS app

2. After starting the app, register first, and then log in (or login if you' re already registered) .

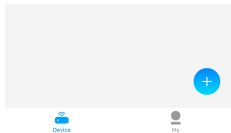
Login

[Verification code login](#)
[Forget password](#)

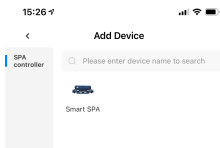
Login, i.e., agree [\(user agreement\)](#) and [\(privacy policy\)](#)

3. Add devices in the following order.

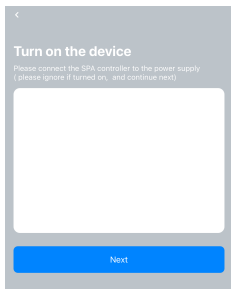
Note: during the period of adding devices, it is necessary to ensure that the mobile phone can access the Internet normally, and the mobile phone and the device need to be in the same network.



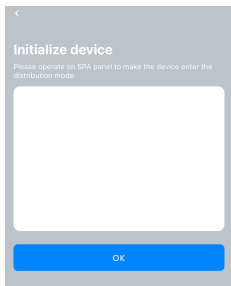
In the device interface, click the plus button



Choose SPA.



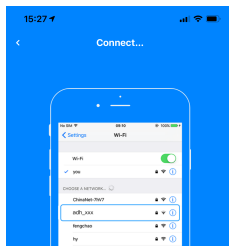
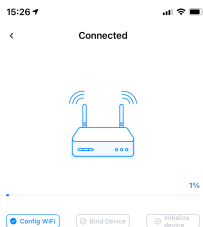
After power on the spa control system, click next



Go to the setting interface of the control panel, and stop the cursor at the WiFi option. At this time, press the confirm button on the panel to set the WiFi to AP. After setting, click OK on the app.



Enter the name and password of the WiFi to which the device will connect , and then click OK

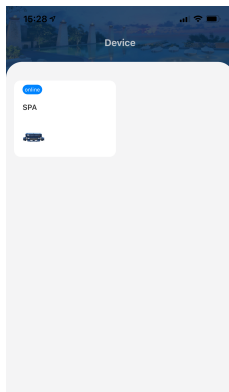


Please connect your phone to "adn_XXX"
Then return to this page

Please try to keep your router, mobile phone and device close to each other

Connect

First, the network distribution progress will be displayed. Then follow the prompts to connect the WiFi of the mobile phone to the WiFi signal of the device.



Click the WiFi name similar to the second item to make connection. After the connection is made, the WiFi name will disappear. Then click return in the upper left corner to enter the device list. Device is added.

4. Clicking the added device, and it can control the SPA normally.

